

## **Call for Papers**

# **FRAGILE LIVES, STRONG CARE: ETHICAL REFLECTIONS ON VULNERABILITY IN NURSING**

**Submission deadline:** 31 January 2026

**Language:** English or double: Polish and English

## **Invitation**

The Journal Nursing in the 21st Century (Pielęgniarstwo XXI wieku) invites submissions for a special issue examining and exploring the notion of vulnerability within the context of nursing care, with a particular focus on its ethical implications. This special issue aims to make visible the ethical issues faced by nurses working with vulnerable individuals and to discuss how the phenomenon of vulnerability is understood in the context of nursing and how it is approached ethically. Vulnerability is a structural and multifaceted condition of human existence, which becomes especially salient in healthcare settings. As both a discipline and a professional practice, nursing is inherently engaged with vulnerability-responding to it through ethically grounded actions, relational competencies, and reflective judgment.

We welcome various types of scientific papers that address the ethical dimensions of vulnerability in nursing. Original research articles conducted with qualitative, quantitative and/or mixed methods; theoretical discussions; review articles containing ethical analysis; studies questioning methodological approaches and articles containing case examples and field experiences will be included in the special issue. Besides, interdisciplinary approaches are particularly encouraged. In this context, any scientific contribution that will enable a multi-faceted discussion of ethical issues encountered both in the academic world and in clinical practice on the basis of vulnerability is open to evaluation.

## **Relevant subtopics include:**

Submissions may address, but are not limited to, the following topics:

- Conceptual and philosophical analyses of vulnerability in nursing;
- Ethical dimensions of nursing practice in situations of physical, emotional, or social fragility;
- The relationship between vulnerability and ethical responsibility in nursing care;
- Nurse–patient relationships and the moral agency of vulnerable individuals;

- Ethical challenges in complex care contexts (e.g., palliative care, mental health, geriatrics, critical care);
- Ethical issues encountered in the care of vulnerable groups (elderly, children, disabled, refugees, LGBTI+ individuals and socioeconomically disadvantaged groups, etc.);
- Care ethics and its application to nursing theory and practice;
- Anthropological, phenomenological, or narrative perspectives on experiences of vulnerability;
- Reflective practice, ethical training, and professional development in nursing;
- Ethical dilemmas in informed consent, privacy, autonomy and consent in vulnerable groups;
- Nurses' experiences of vulnerability in the field and their search for ethical solutions;
- Ethical communication strategies with vulnerable individuals;
- Evaluation of vulnerability and ethical content in nursing education;
- Policy, institutional, and socio-political implications of vulnerability-centered care;
- Ethical questioning of services for vulnerable groups in the health system;
- Vulnerability-based analysis of institutional ethical guidelines and professional standards;
- Determination of ethical priorities and restructuring of care in the care of vulnerable groups in times of crisis (pandemic, earthquake, etc.).

These topics are intended as a guide. This special issue is open to all scientific studies that focus on vulnerability and ethics and offer different perspectives.

The Journal of Nursing in the 21st Century (Pielęgniarstwo XXI wieku) publishes only original research articles that align with the journal's scope and objectives and meet the scientific standards necessary to undergo peer review by our international expert reviewers. Only manuscripts that have not been previously published, either as preprints, press releases, or conference proceedings, will be considered for peer review. Submissions based on previously disseminated content will not be accepted.

Any promotion or public sharing of the manuscript by the author may take place only after the article has been officially accepted for publication by The Journal of Nursing in the 21st Century.

Please note that the journal does not accept articles that promote commercial AI tools, systems, or devices, nor those that contain fully synthetic (AI-generated) content.

When submitting, please, indicate in the system that article is meant for the special issue "Fragile Lives, Strong Care: Ethical Reflections on Vulnerability in Nursing"

## **GUEST EDITORS:**

### **Dr Stefania Chiappinotto**

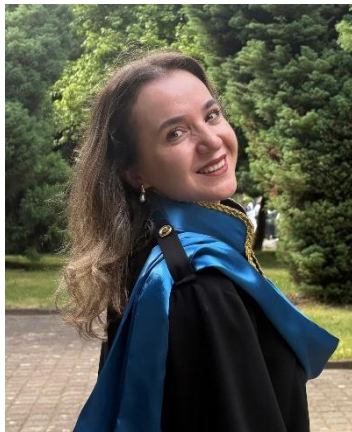
Dr. Stefania Chiappinotto is a Research Fellow in the Department of Medicine at the University of Udine, Udine, Italy. She provides undergraduate and postgraduate teaching regarding clinical



practice, evidence based practice and quality of nursing care. Her main research interests encompass nursing education, ethical nursing issues, missed nursing care, and forensic aspects of care. She is involved in numerous nationally and internationally funded research projects focused on ethics topic. Currently, she is a research team member in three Erasmus+ Key Action projects addressing ethical issues in nursing care, vulnerable populations, and future challenges for nursing practice.

### **Dr Aysun Bayram**

Dr. Aysun Bayram is an Assistant Professor in the Department of Fundamentals of Nursing at the Faculty of Health Sciences, Karadeniz Technical University, Trabzon, Türkiye. She



provides undergraduate instruction in nursing care, clinical practice, communication, and professional ethics. Her scholarly interests encompass nursing practice, nursing education, ethical issues in nursing, dementia care and geriatric nursing. She has participated in numerous nationally and internationally funded research projects and has contributed to a wide range of peer-reviewed publications and academic volumes. Currently, she is a research team member in an Erasmus+ Key Action project addressing vulnerable populations.